

FREEHOLD



## AMJ COMMERCIAL PARK

@ MUAR, JOHOR





Broad Frontage,  
Soaring Brand Success

宽宏门面，品牌腾飞

AMJ Commercial Park is strategically located along Pintasan Muar (Lebuh AMJ) with high traffic flow. It ensures exceptional brand exposure where your business can effortlessly attract customers.

AMJ 商业区位于 Pintasan Muar (AMJ 大道)，拥有绝佳的商业地理位置。高车流量带来极佳品牌曝光，助您精准吸引客户。



LAND AREA 土地面积 : 25' X 148'





# Shop Office + Multipurpose Warehouse

## 商业办公楼 + 多用途仓库



### Spacious Frontage 宽敞门面设计

Each shop unit features a spacious **25ft frontage** while combined units offer **approximately 50ft**. This expanded frontage enhances brand image and visibility.

每间店铺拥有**25尺超大门面**，两间连通可达**50尺**，打造更具冲击力的品牌形象，助力企业升级市场竞争力。



### Highly Flexible Layouts 高度灵活空间布局

This double-storey shop office and multipurpose warehouse building is designed to offer both functional office space and expansive storage capacity. The warehouse, with a **ceiling heights up to 26ft**, provides ample storage capacity and adaptability for various business needs.

前端为办公楼，后端设有高达**26尺**的多用途仓库，提供广阔的存储空间，灵活的空间布局可轻松适配多种商业模式，满足不同行业的需求。



### High Exposure, Maximum Visibility 超高品牌曝光率

Facing **Pintasan Muar (Lebuh AMJ)**, ensuring constant traffic and brand awareness.

面向 **Pintasan Muar (AMJ 大道)**，高车流量，全时段品牌展示，提升客户流量！



### Excellent Connectivity & Ample Parking 交通便捷 停车无忧




Easy access to **Malacca, Tangkak Toll, and Pagoh Toll** ensuring seamless logistics, and **ample parking** for customer convenience.

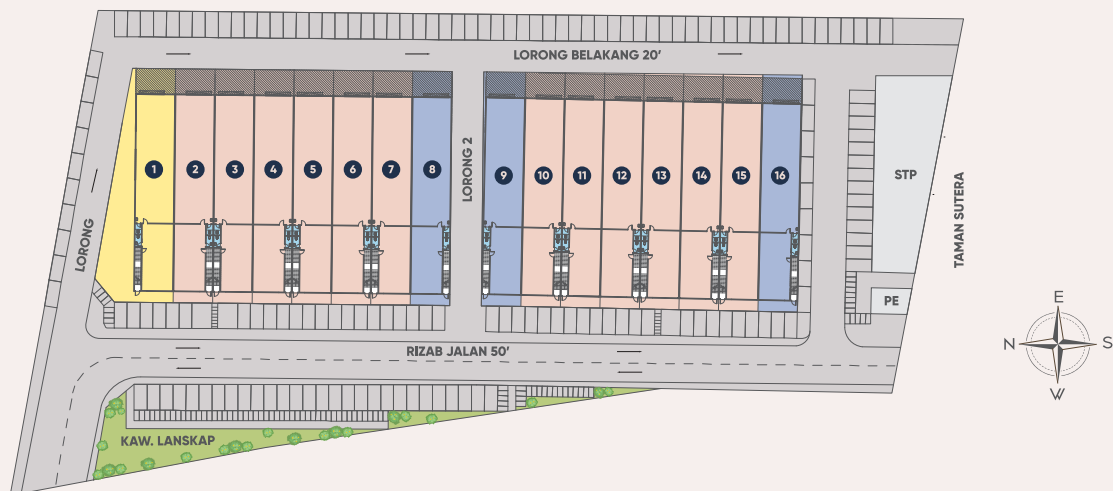
直通**马六甲、东甲收费站、巴莪收费站**等核心交通枢纽，并提供宽敞的停车区域，确保客户与物流往来无忧。



# Site Plan

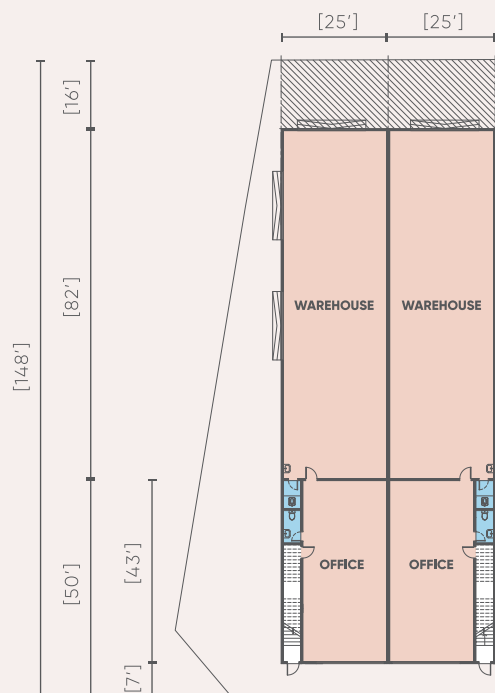
## 总设计图

-  Corner Lot
-  Intermediate Lot
-  End Lot

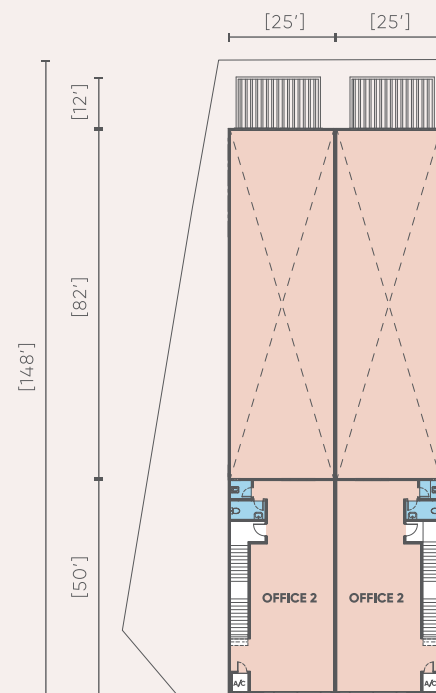


# Floor Plan

## 平面图



GROUND FLOOR PLAN



FIRST FLOOR PLAN



# Location Map 位置图





## Building Value For Life

ENQUIRY NUMBER

**012-6886 252 / 012-6117 703**



AMJ Commercial Park



kccrealty1983official



**Peck Seong Realty Sdn Bhd**  
198301010065 (105375-A)

Head office: 93, Jalan Hashim, 84000 Muar, Johor.  
E. muar.sales@kcc-realty.com



**06-9533399**



**www.kcc-realty.com**

CERTIFIED  
**ISO 9001**



All rendering and photographs contained on the circular are artist impression only. The developer reserves the right to modify and part of the building prior to completion as directed or approved by relevant authorities or architect. All plans, layouts, information and specification are subject to change and cannot form part of an offer or contract.